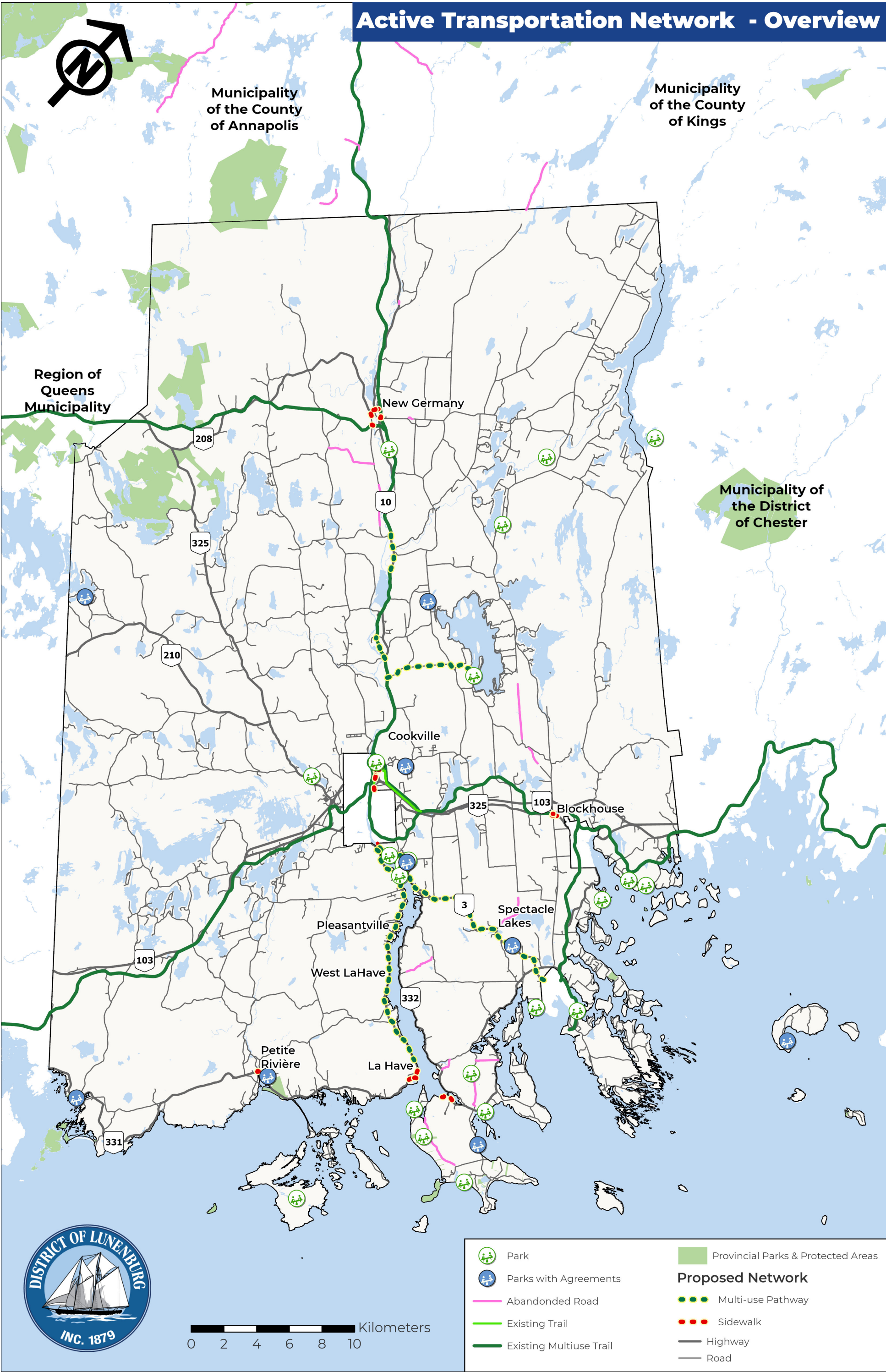
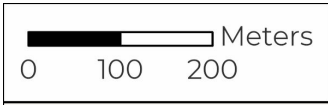


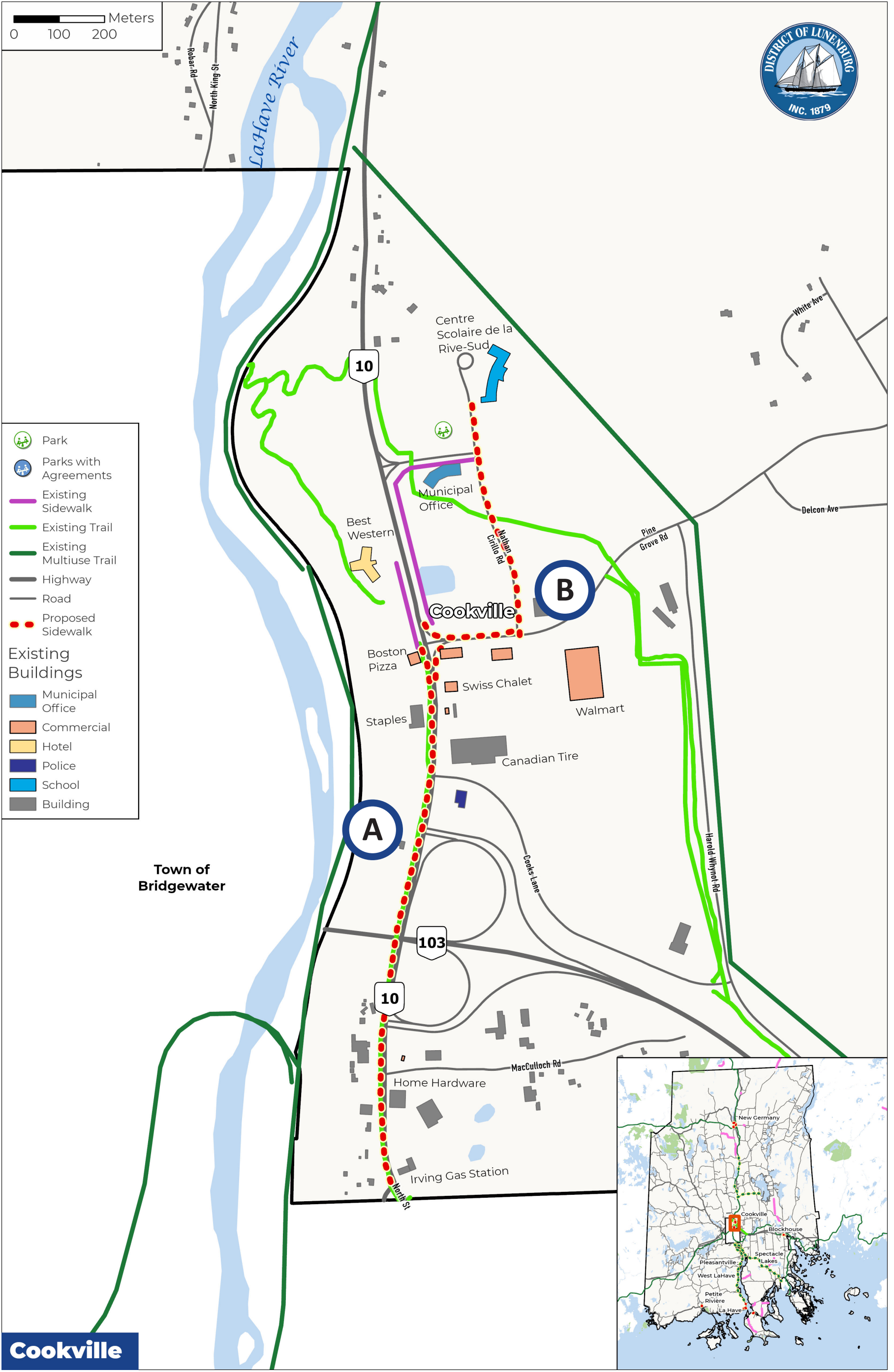
# Active Transportation Network - Overview







- Park
  - Parks with Agreements
  - Existing Sidewalk
  - Existing Trail
  - Existing Multiuse Trail
  - Highway
  - Road
  - Proposed Sidewalk
- Existing Buildings
- Municipal Office
  - Commercial
  - Hotel
  - Police
  - School
  - Building

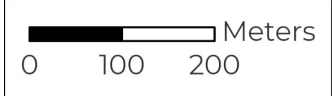


**A**

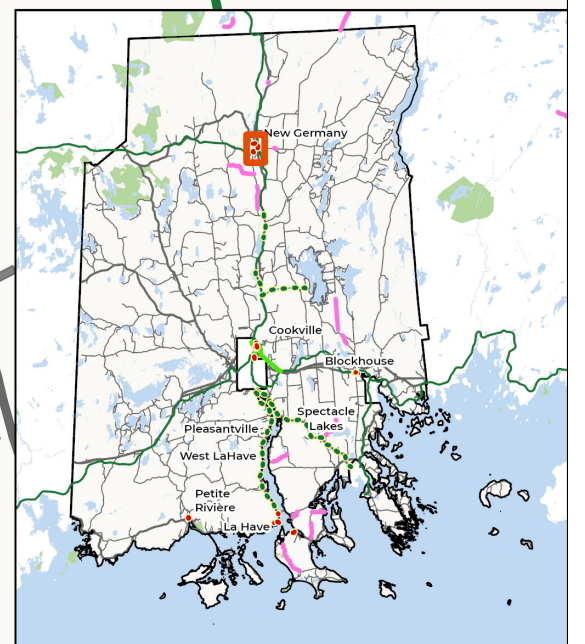
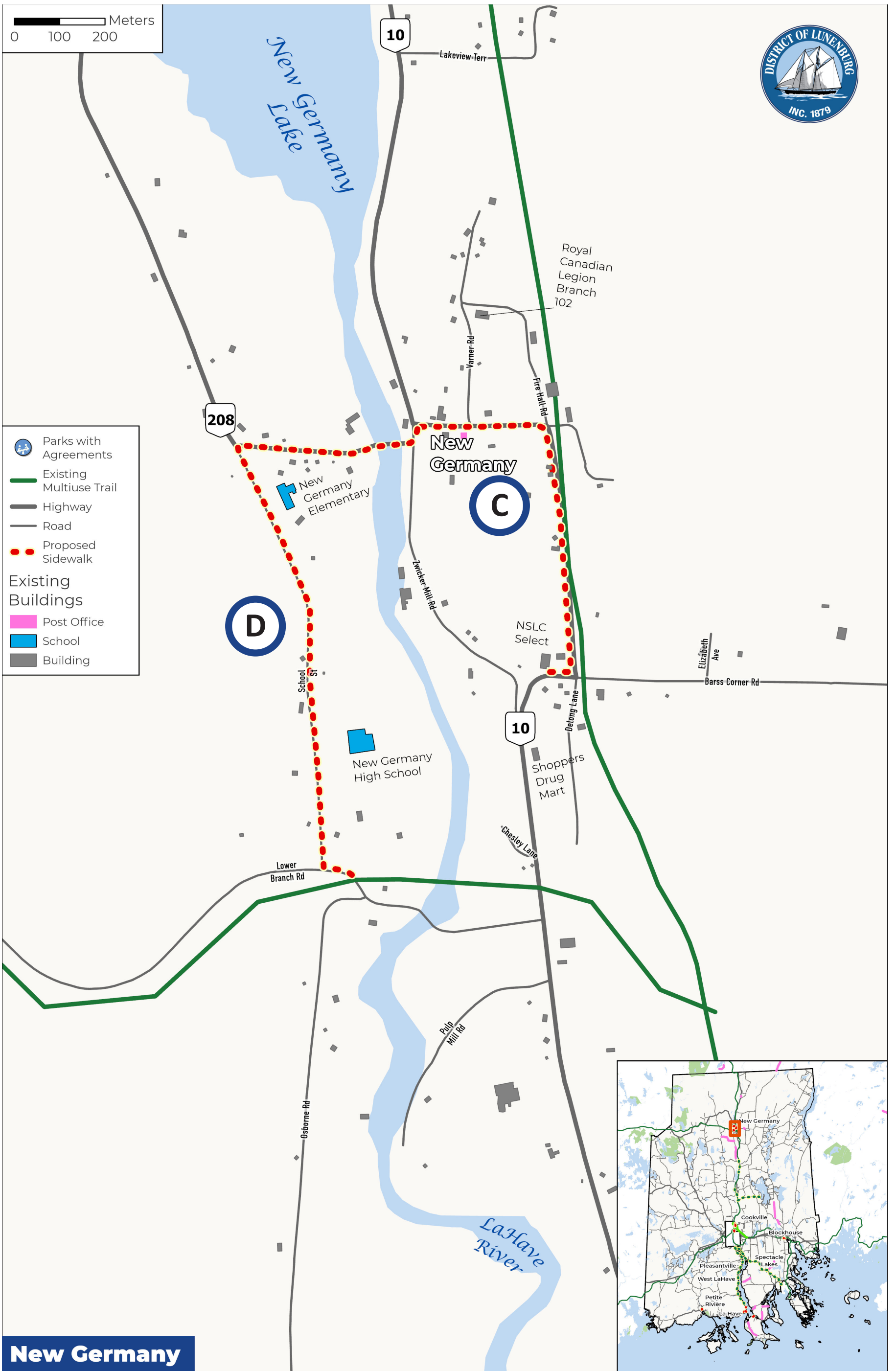
New pedestrian pathway on Highway 10 from Pine Grove Road to Lahave Street

**B**

New pedestrian pathway from Pine Grove Road at Highway 10 to Nathan Cirillo Road, connecting to Centre Scolaire de la Rive-Sud



- Parks with Agreements
- Existing Multiuse Trail
- Highway
- Road
- Proposed Sidewalk
- Existing Buildings**
  - Post Office
  - School
  - Building



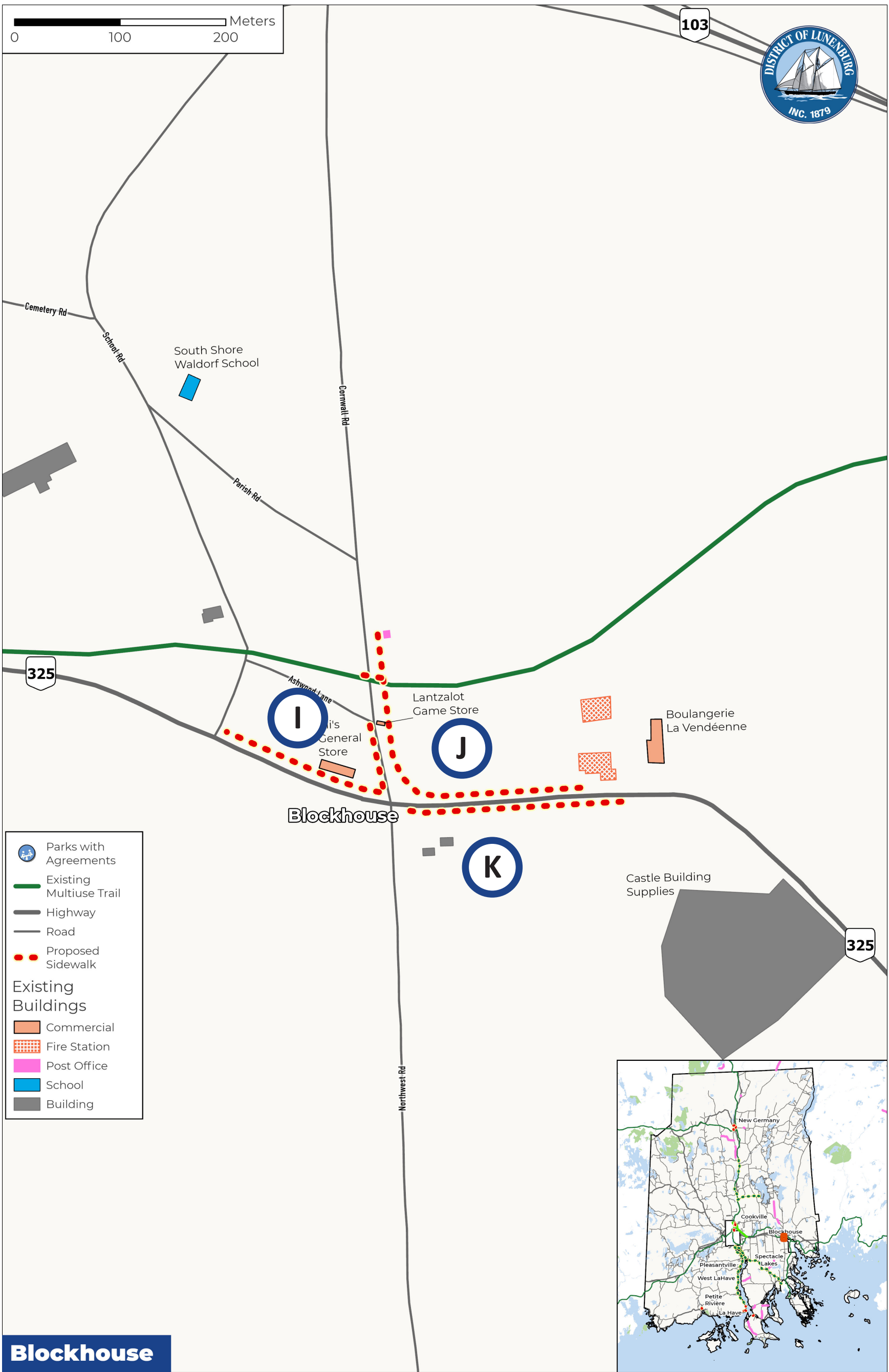
- C** New pedestrian pathway from the intersection Highway 10 at Barss Corner Road to Route 208 at School Street
- D** New pedestrian pathway from Route 208 at School Street to Lower Branch Road at the South Shore Annapolis Trail crossing



**E** New pedestrian pathway from River House on Petite Rivière Road to Route 331, terminating at the existing pedestrian pathway crossing Petite Rivière

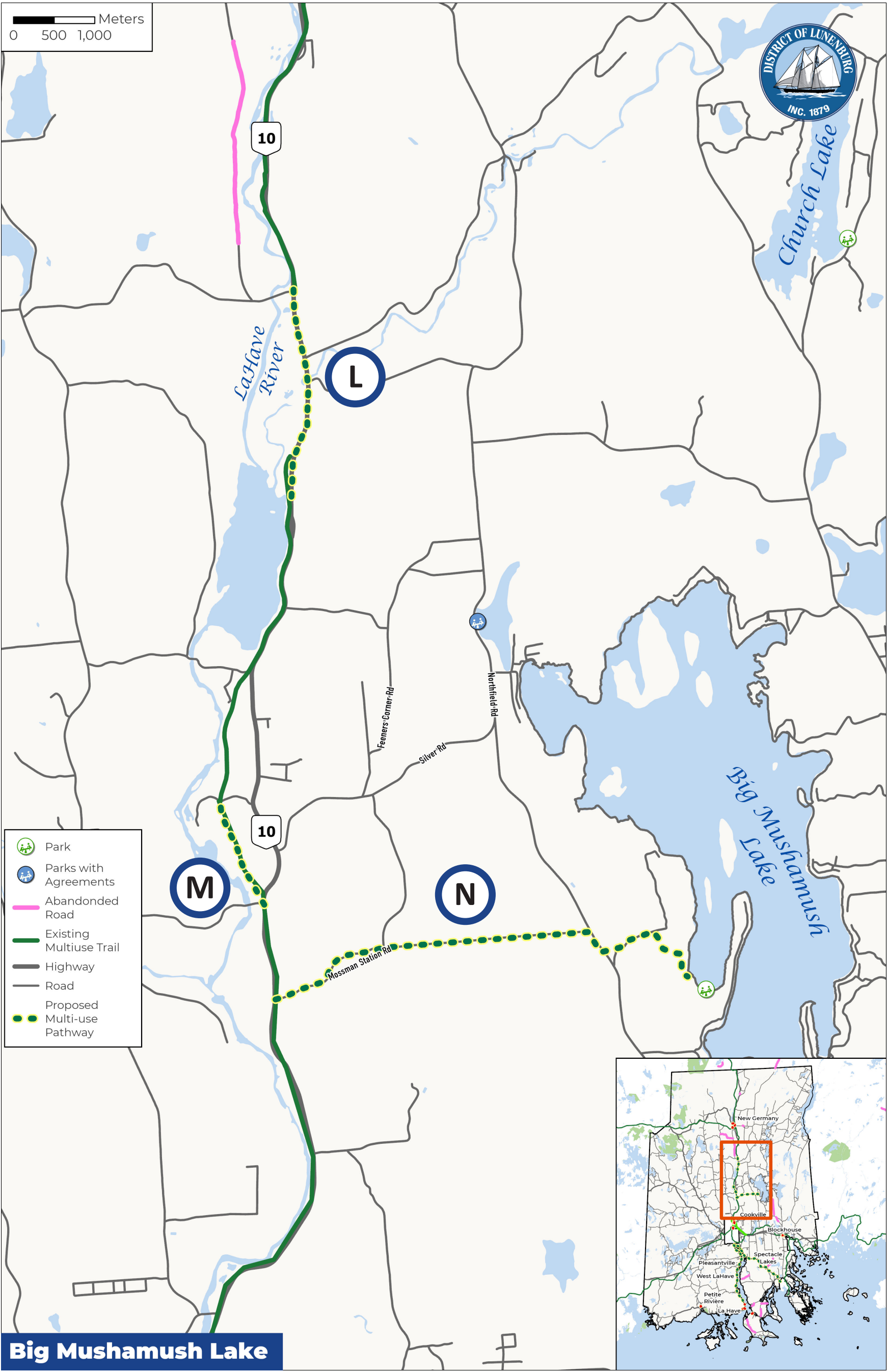






- I** New pedestrian pathway along Route 325 from School Road to Northwest Road/Cornwall Road terminating at the Adventure Trail crossing
- J** New pedestrian pathway on the east side of Main Street from Northwest Road to Blockhouse Mosque
- K** New pedestrian pathway from Canada Post on Cornwall Road to Blockhouse Fire Hall on Main Street





L

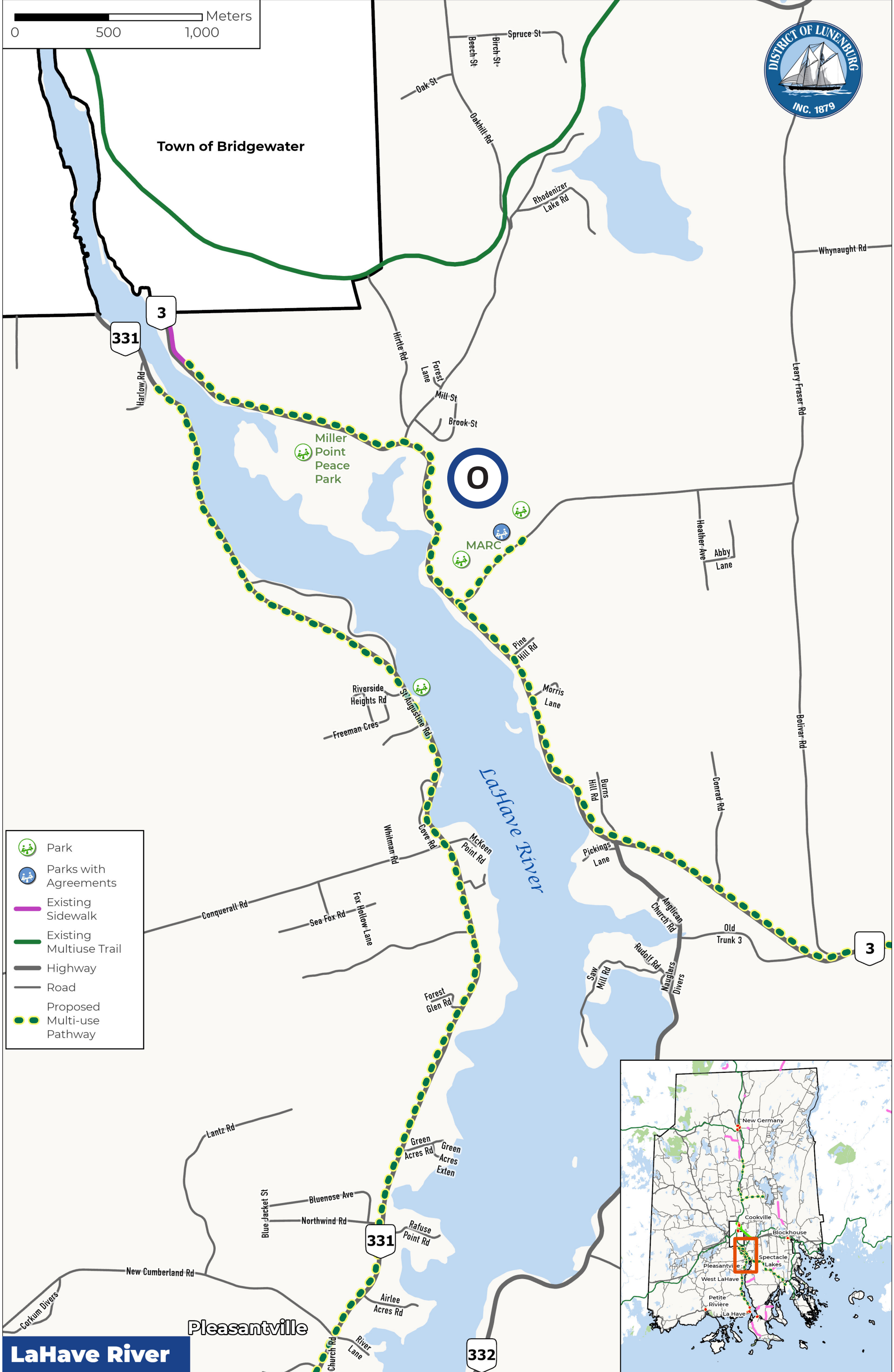
New multi-use pathway to fill in the Rails to Trails Network

M

New multi-use pathway to fill in the Rails to Trails Network

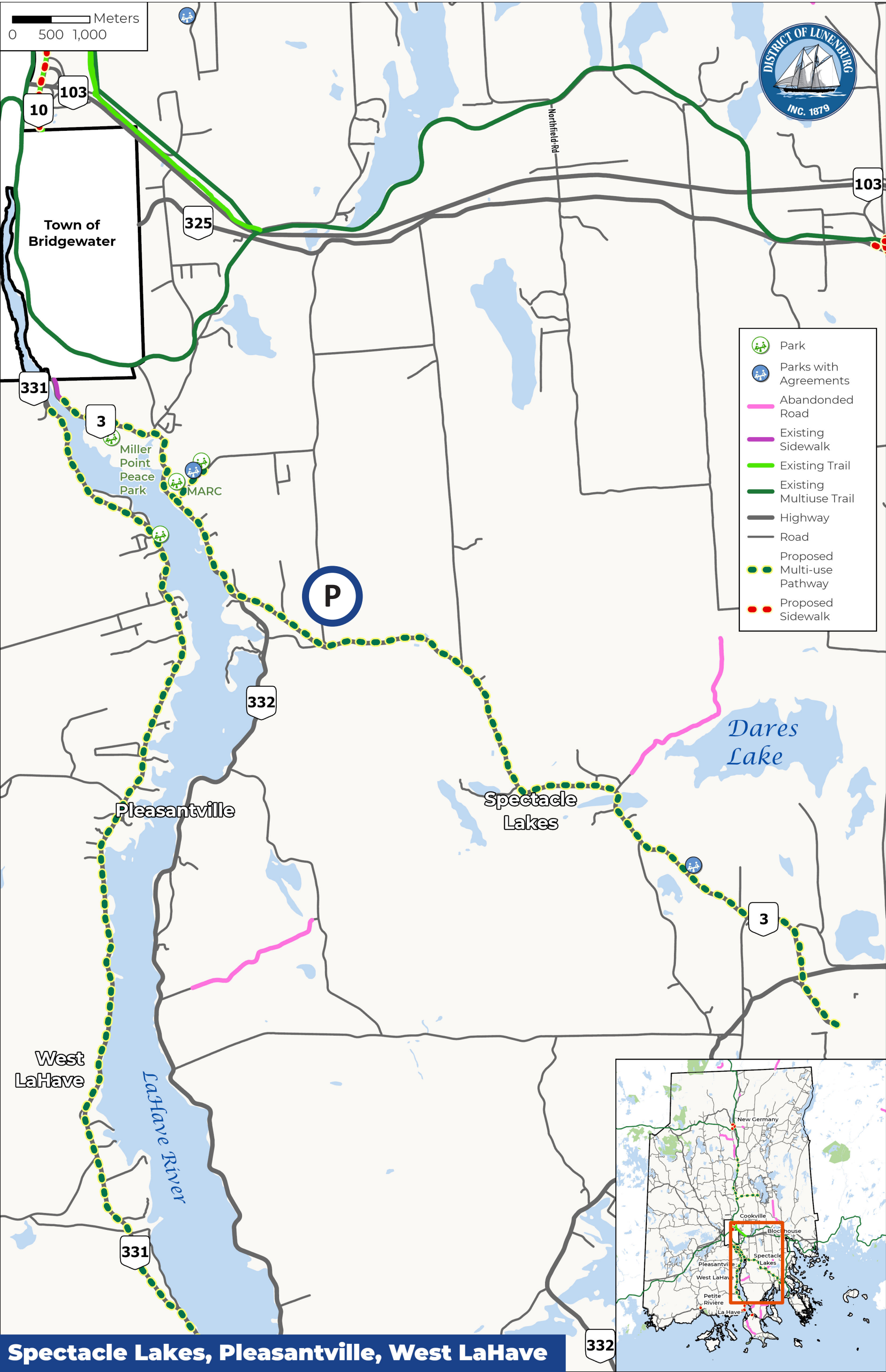
N

New multi-use path connecting the LaHave River Trail to Mushamush Beach

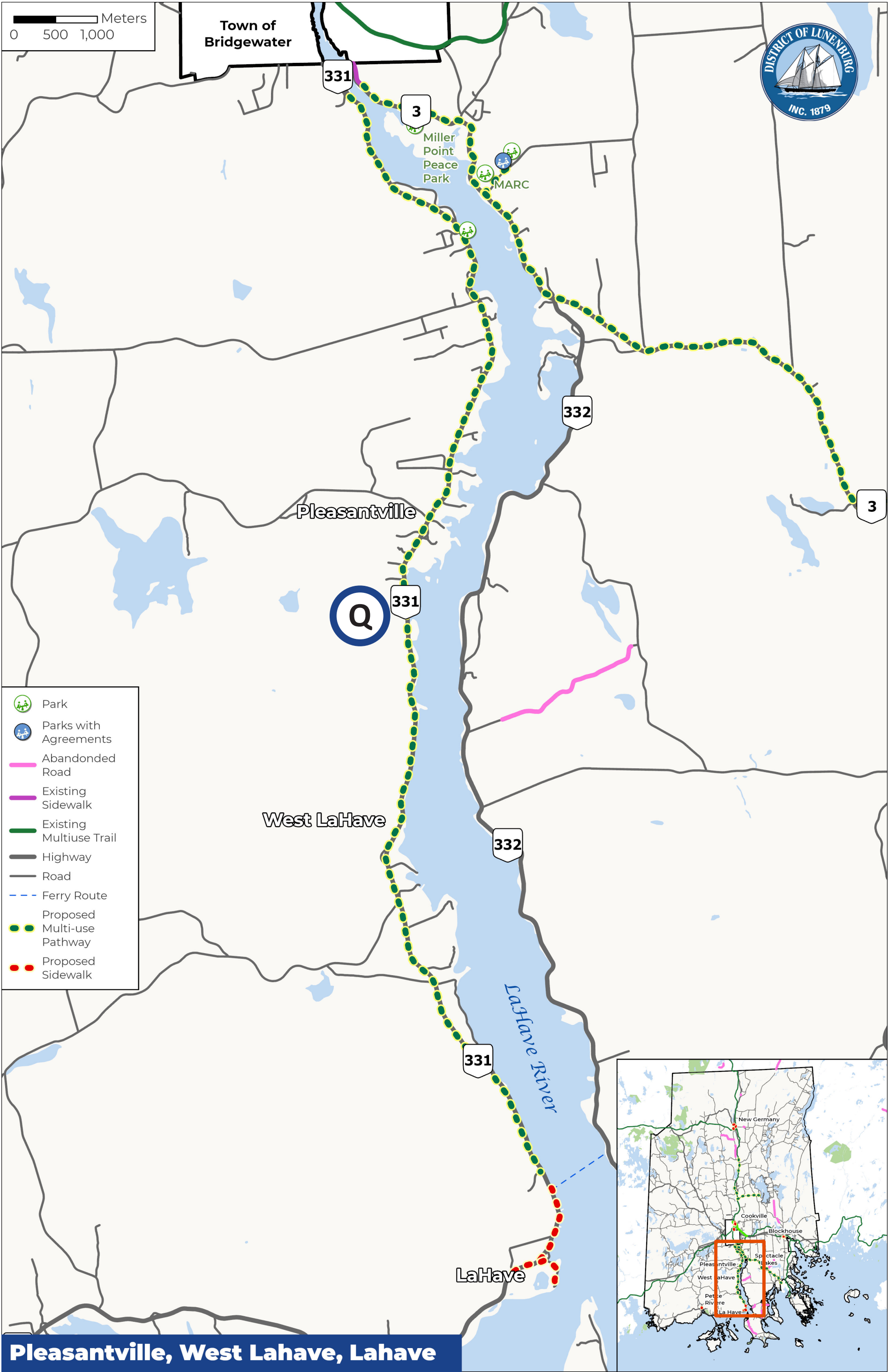


 New multi-use path along Highway 3 from Glen Allan Drive to Larry Fraser Road, connecting to the MARC





**P** New multi-use path along Highway 3 from the MARC to the intersection of Highway 3 and Route 332.



**Q** New multi-use path along the west side of the LaHave River from the Town of Bridgewater border to the LaHave Ferry (continued from previous board)